

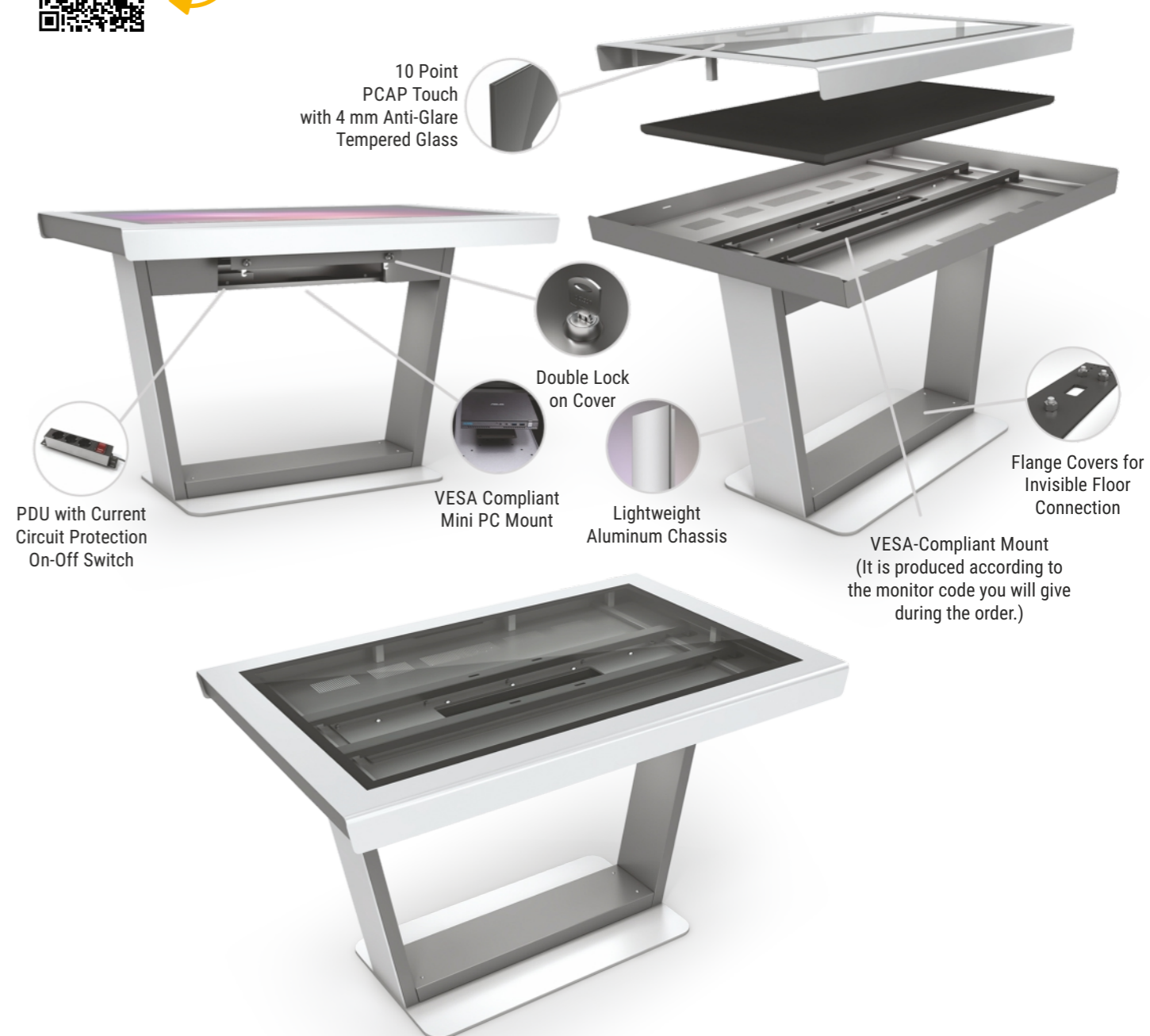
XT Indoor Kiosk / Touch Table Enclosure

Landscape/ Single Sided
43" | 49" | 50" | 55" | 65"

cletech

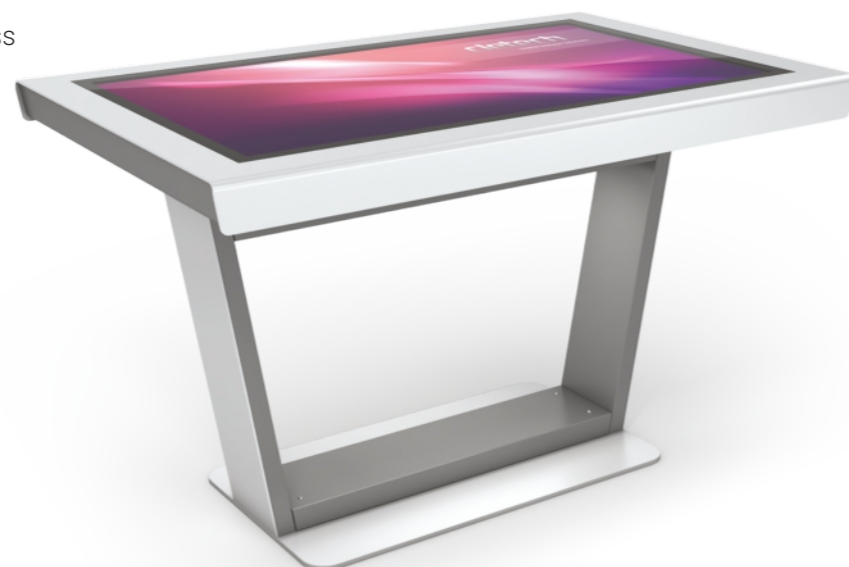


Show this product on the website



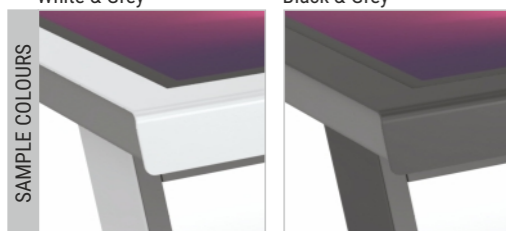
Key Features

- High Quality Finishes
- Lockable area for PC-Media Player
- 10 Point PCAP Touch with Anti-Glare Glass
- Available for Floor Mounts
- Easy Monitor-TV Mounting
- Aluminum Main Chasis



White & Grey

Black & Grey



Main Features

● Included ● Optional ● On Project ● Not Available

Custom Color	Client Logo	Floor Mounts	Base Wheels	Base Feet	Tempered Glass	Lockable Cover	PDU 3 x Socket	Fans for Ventilation	Touch Screen

MONITOR		ENCLOSURE				PACKAGE	
Display (inch)	Mountable Max. Monitor Dimension	Dimension (WxHxD)	Flange Dimension (WxD)	Weight (kg)	Viewing Area (WxH)	Dimension (WxHxD)	Weight (kg)
43"	980x570x55 mm	1177x1273x759 mm	627x400 mm	102	941x529 mm	1260x1400x840 mm	110
49"	1115x645x55 mm	1310x1273x834 mm	760x500 mm	116	1074x604 mm	1400x1400x920 mm	126
50"	1135x655x55 mm	1332x1273x846 mm	682x500 mm	117	1096x616 mm	1410x1400x930 mm	127
55"	1250x720x55 mm	1446x1273x910 mm	896x500 mm	128	1210x680 mm	1530x1400x990 mm	138
65"	1470x850x55 mm	1664x1273x1034 mm	1200x500 mm	145	1428x804 mm	1880x1400x1100 mm	180

* Multiple product package sizes may differ from the information written above. Please get information when you order.